

## ROTARY VALVE RQC



### Product Introduction

It is applied to discharge powder material or add powder material either in different positive air pressure or in different negative air pressure of pneumatic conveying system. Also it is necessary device for ventilation and move dust system. The max difference pressure is less than 0.12Mpa; Working temperature  $\leq 200^{\circ}\text{C}$ . Construction material in SS 304 and ss316 is both available.

### Product Feature

- ★ Good design in structure and precise matching method.
- ★ Sheared Enlarge inlet/outlet without restriction of cross section for highest capacity.
- ★ Outboard bearing design, combined seal structures including packing, Oil Seal, labyrinth, shaft gas seal and mechanical seal.
- ★ It is easy to dismantle and install the rotor for cleanout.
- ★ Configuration is design at high filling rate, the maximum rate up to 100%.
- ★ Torque protector and zero switch interlock with remote control system to effectively protect normal operation and service of equipment. (customised).
- ★ Minimum gap between rotor and body can lock the air efficiently.
- ★ We fits SEW drives as our standrad, other drives can be fitted on request. Whilst have a perference for direct drives, chain, air and hydraulic drives can be also supplied.

Size Type RQC	100	150	200	250	300
Ltr/rev*	1.5	3.5	7.5	14	24

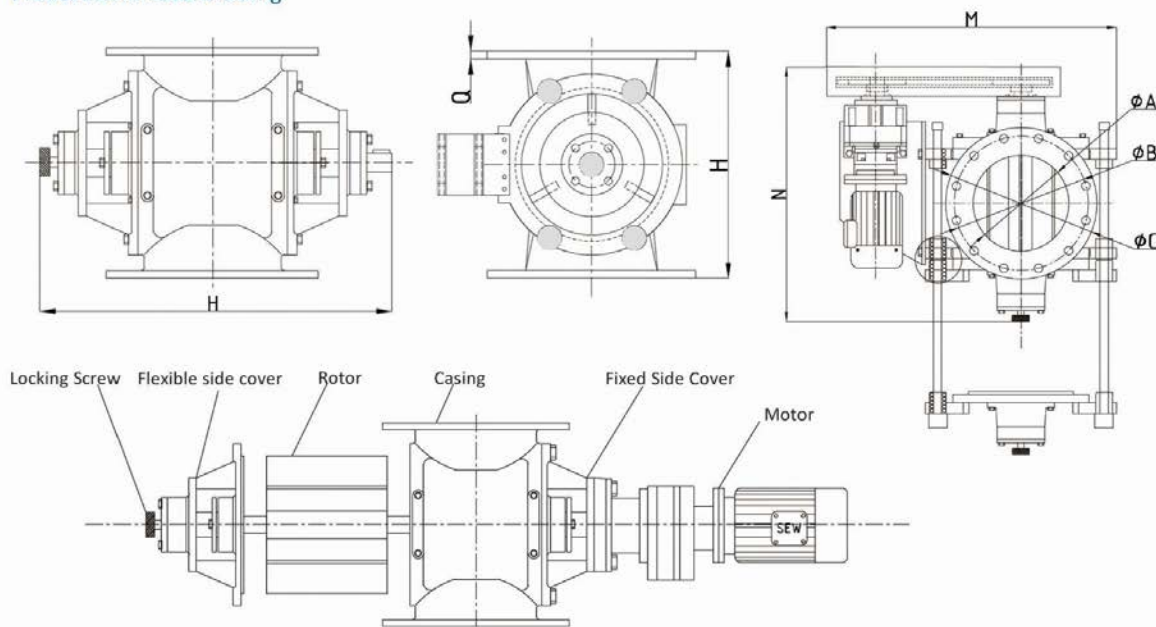
\* at 100% filling

## ROTARY VALVE RQC

### Main Parameters and option

Main Parameters	Pressure Range	1.5 bar system and differential pressure
	Work Temperature	-20°C~200°C
	Main Size	DN100 ~ 300 (4" ~ 12")
	Flange Standard	PN10, ANSI 150lbs, JIS, GB, HG, SH or customised
	Drive Mode	Direct Drive/ Chain Drive with OSHA Guard
	Capacity	100 KG~20000Kg/H
	Application Medium	Powder and granular form
Option	Rotor	Adjust blades, reduce capacity, scalloped, end disc etc.
	Plating	Nickel and chrome plating and Tungsten coating
	Else	Air purge regulation station, etc.

### Product Schematic Drawing



### Technical Parameters

Type	Installation Dimension									RPM	Motor	Weight (kg)
	ØA	ØB	ØC	Q	H	L	M	N	N-Ø			
R Q C	100	160	190	8	250	690			6-Ø13	3~35	0.55	80
	150	220	250	8	300	730	600	560	8-Ø13		0.75	100
	200	280	320	10	350	760	650	600	8-Ø18		0.75	120
	250	330	370	10	380	800	720	640	8-Ø18		1.1	165
	300	390	440	15	460	930	850	720	12-Ø18		1.5	280

Note: If match special flange, please let us know before production.